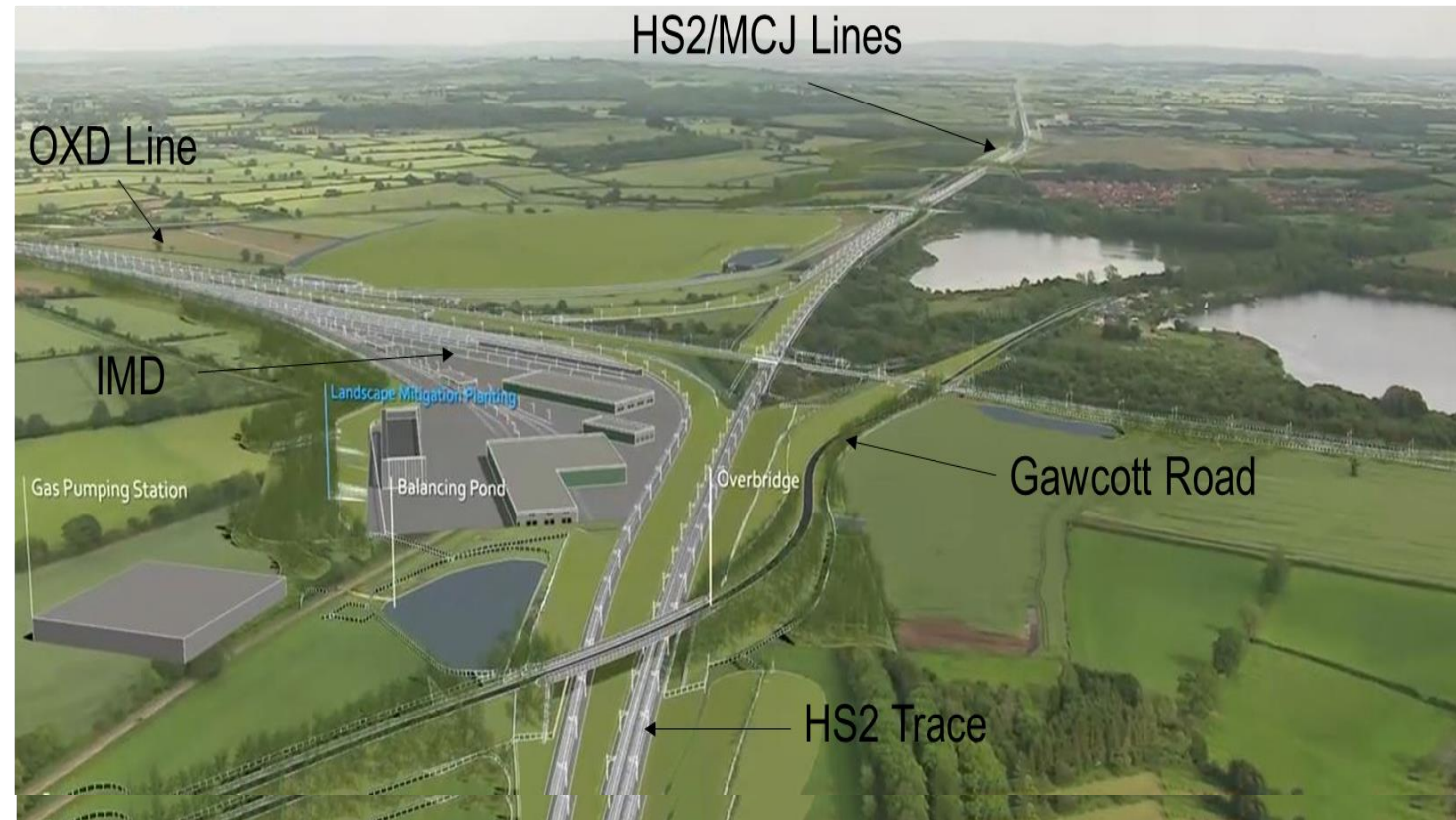


Calvert Area Liaison Meeting

DRAFT

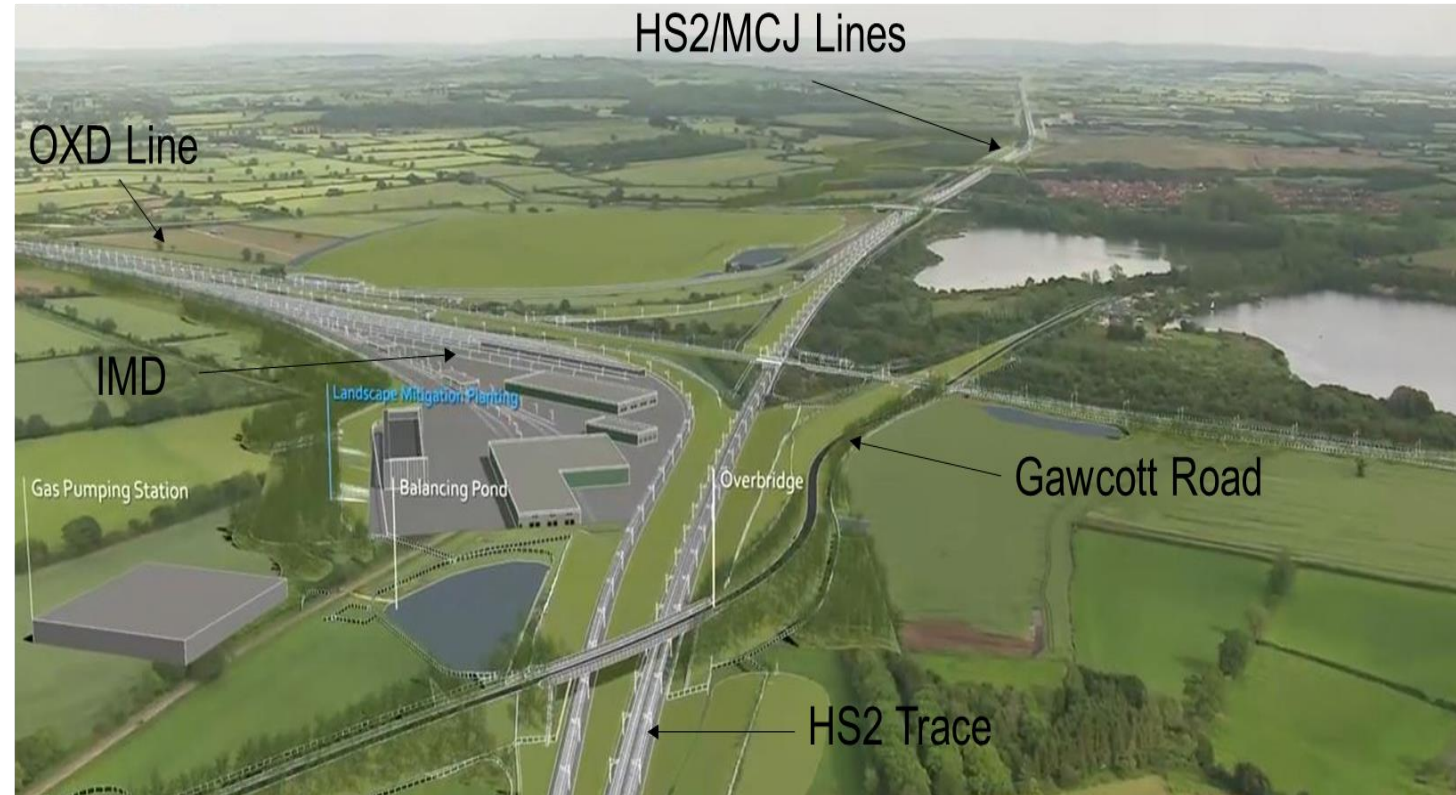
16th March 2023

Chris James



Meeting Update

1. Engagement Update & Site Visits
2. Community Work
3. Construction & Highways Update
4. Enquiries & Complaint
5. Handover



Engagement Update

Event	Date (2023)	Number of Attendees
Brackley Lane MVC	26 th Jan	4
Calvert Green – Drop in	15 th Feb	17
Twyford - Drop in	22 nd Feb	38
Steeple Claydon Drop in	28 th Feb	18
Bat structure on line KDE	8 th March	5
Bat Structure Drop in event	15 th March	9



Site Visits

Action log Item 165

Site visit planned on
Tuesdays between 10.00 hrs
and 12.00 hrs:

1. 14th March
2. 18th April
3. 16th May
4. 20th June

Please let us know if you
would like to do a site visit.



Community Work

School



Scout Hut



Planting



Garden of Reflection



Lawn Mower



Construction Update

Perry Hill Overbridge



Charndon Lodge Underbridge



Addison Road Overbridge



Construction Update - Culverts



Construction Update - Culverts



What You Said / We did

	You Said	We did
1	Raised concern about vibration caused by HGV vehicles driving along Werner Terrace	Attended monitoring of vibration and sent a report with results and findings.
2	Asked for a technical meeting to explain operational noise	Held a meeting with our specialists to explain operational noise.
3	Raised concern about the vibration impact of the Brackley lane works by Fusion	Held public events and installed a vibration monitor
4	Asked for a public meeting to discuss the notices issued relating to surveys	Held a meeting with our land and property specialist
5	Raised concerned about compaction works when compacting a ramp	Stopped work immediately, investigated and carried out vibration monitoring.
6	Asked for a procedure that sets out the process for undertaking surveys	Produced a process and provided updates in the CALM meetings
7	Requested a vibration monitor is installed even though assessments indicated low levels of vibration & monitor was not needed.	We agreed to install a vibration monitor.
8	Requested that we provide the output of noise / dust / vibration monitors	Provided noise & dust results, vibration to follow.
9	Asked for a sub group to review this topic in detail	First meeting took place last week

What You Said / We did

	Aspect	Noise	Vibration	Information
1	Traffic on HGV Routes		Concern at Werner Terrace	Monitoring results & report, British Standard, CoCP
2	Construction Works	Covered in meeting 1 though further discussions to follow.	Covered in part at meeting 1 though further discussions to follow and output of monitoring	Construction assessment reports. CoCP.
3	Ground Settlement	To be discussed in meeting 2	To be discussed in meeting 2	Information Paper C3
4	Operational Phase	Concern regarding impact and barrier height. Further S17 submission later this year		Noise Demonstration Reports



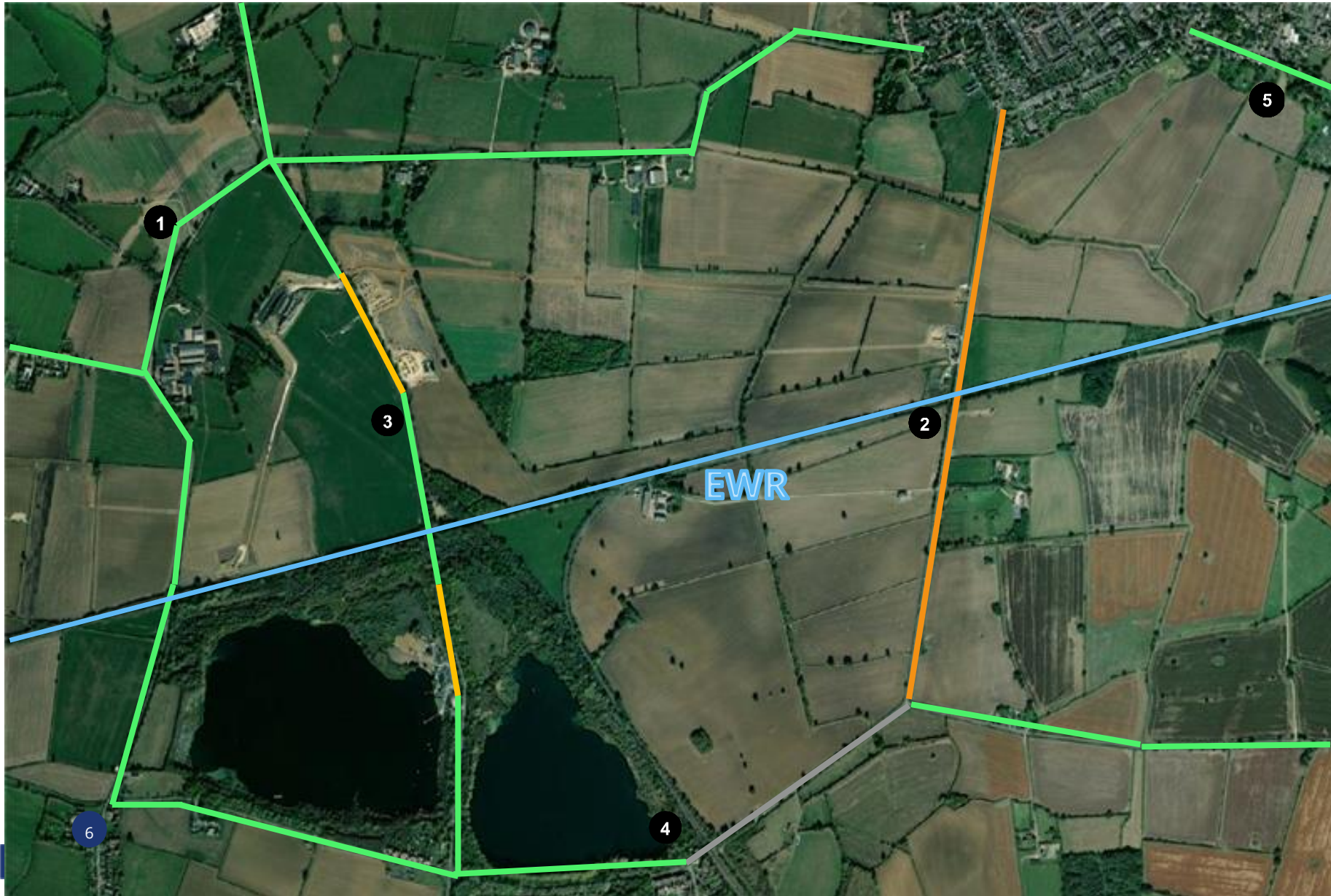
Current status...to 20th March 2023



- 1 Steeple Claydon to Twyford – Open to Traffic
- 2 **Addison Road** – Closed to Traffic. Construction of the embankment for handover to EWR.
- 3 Gawcott Road – Open to traffic.
- 4 Werner Terrace Rd – Open to Traffic.
- 5 Queen C. Road – Open to Traffic
- 6 School Hill Road – Open to Traffic.

*These dates are subject to change

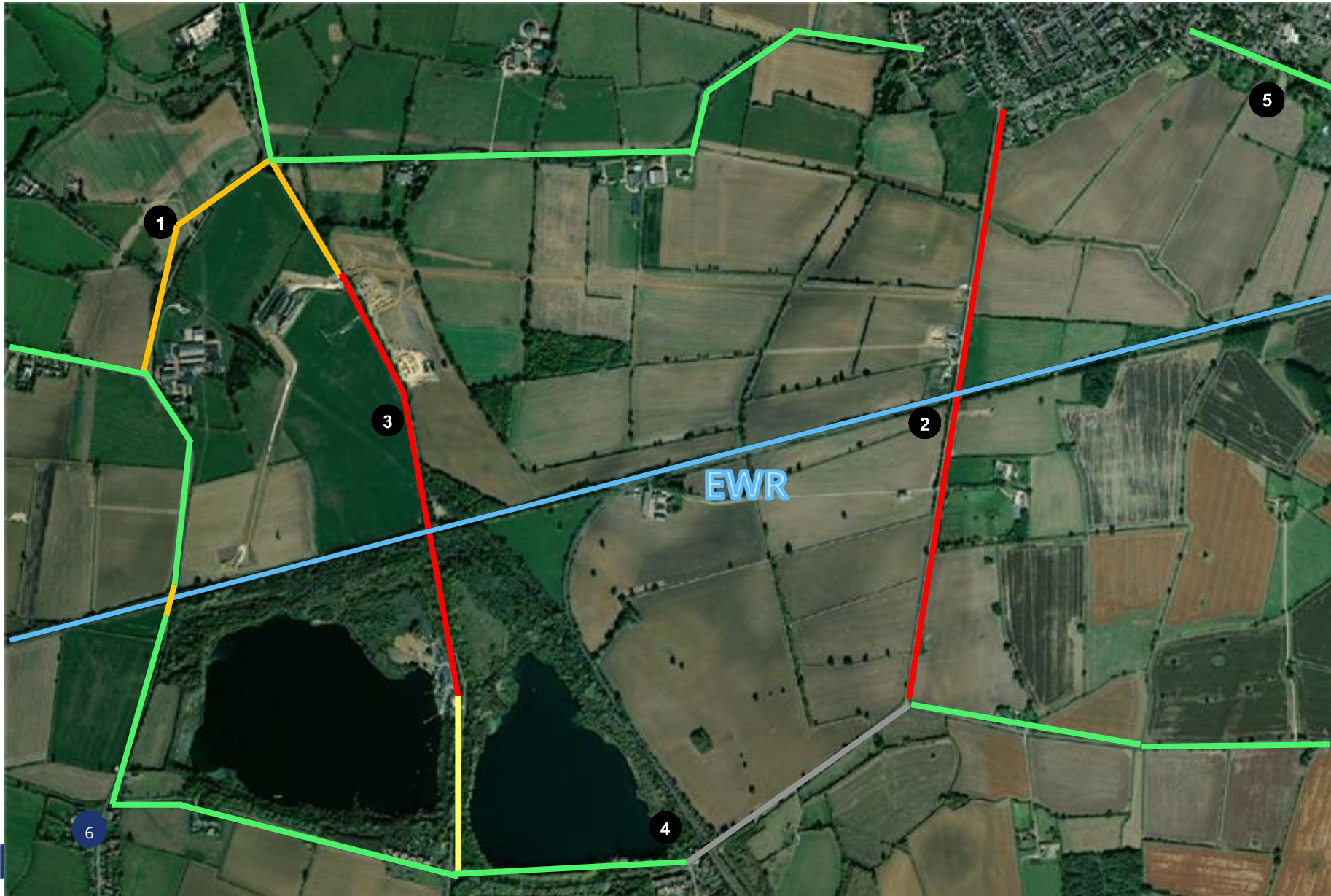
20th March 2023 to 02nd April 2023



- 1 Steeple Claydon to Twyford** – Open to Traffic.
- 2 Addison Road** – Closed to Traffic. Construction of the embankment for handover to EWR.
- 3 Gawcott Road** – Open to traffic. **20th March – 02nd April traffic lights for SGN**
- 4 Werner Terrace Rd** – Open to Traffic.
- 5 Queen C. Road** – Open to traffic
- 6 School Hill Road** – Open to traffic.

*These dates are subject to change

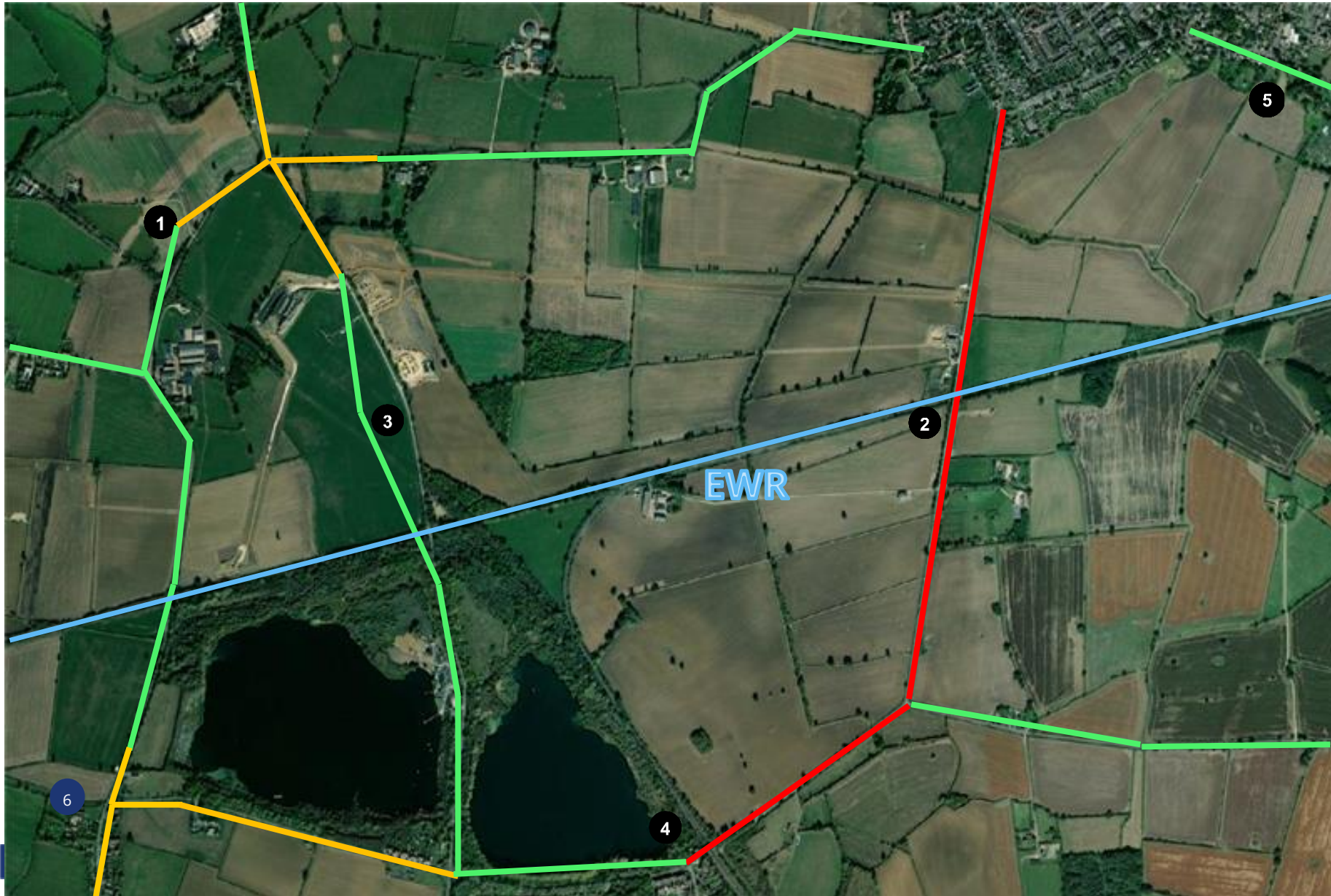
03rd April 2023 to 30th April 2023 (Line Items – 3168 and 3441)



- 1 **Steeple Claydon to Twyford** – Open to Traffic. Possible Two way lights planned for short duration to complete water connections for Mr Withey Meter
- 2 **Addison Road** – Closed to Traffic. Construction of the embankment for handover to EWR
- 3 **Gawcott Road** – Closed to Traffic whilst completing gas connections and tie in road works.
.
- 4 **Werner Terrace Rd** – Open to Traffic.
- 5 **Queen C. Road** – Open to traffic
- 6 **School Hill Road** – Open to traffic.

*These dates are subject to change

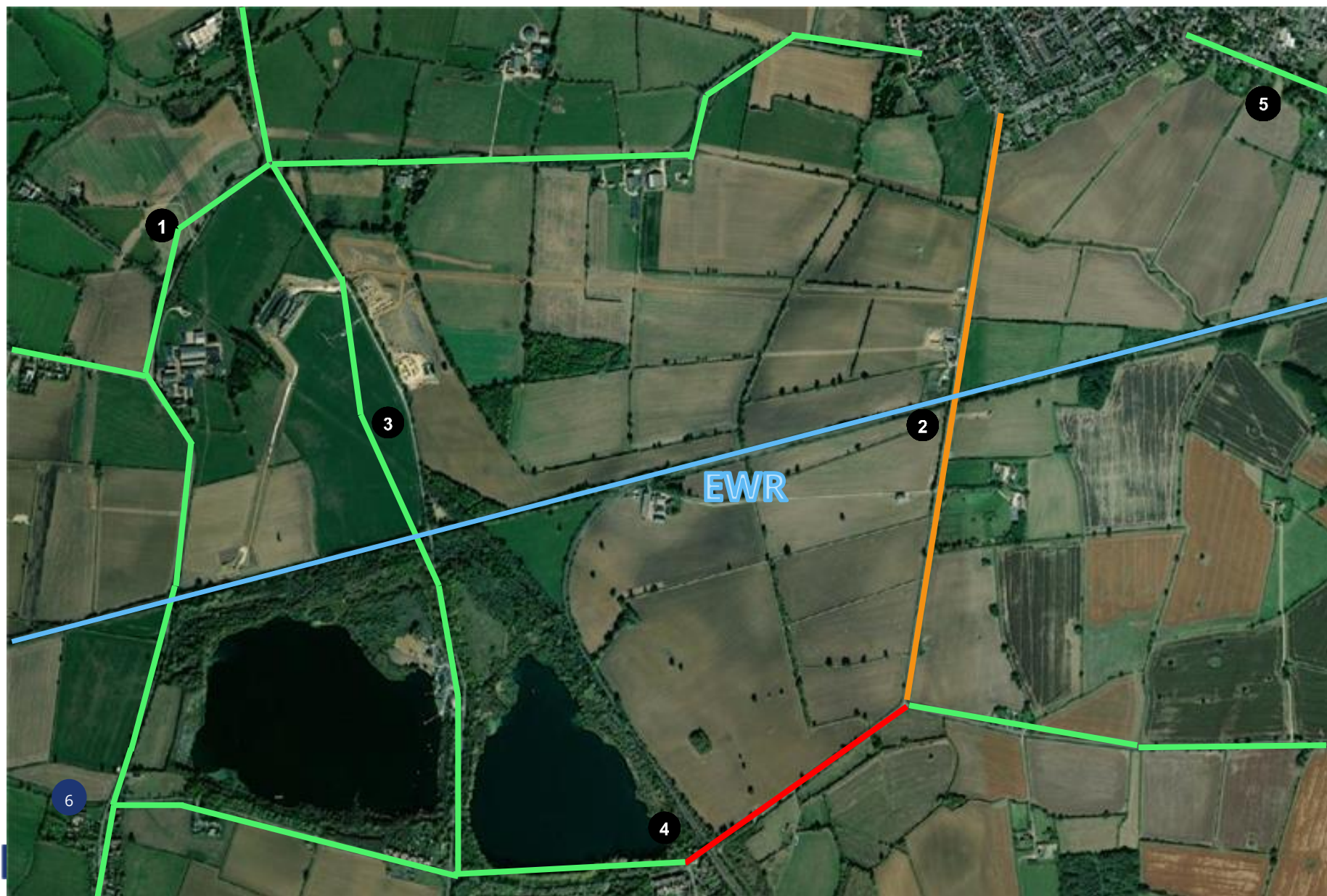
01st May 2023 to 02nd June 2023



- 1 Steeple Claydon to Twyford** – Open to Traffic. Four way lights planned for 4 weeks to complete trial holes for IP Gas Main. At junction with Steeple Claydon to Twyford. MHR Crossing under two way lights.
- 2 Addison Road** – Closed to Traffic. Construction of the embankment to handover to EWR.
- 3 Gawcott Road** – Open to Traffic using new temp link road alignment.
- 4 Werner Terrace Rd** – Closed for demolition of the bridge and construction of new bridge and highway..
- 5 Queen C. Road** – Open to traffic
- 6 School Hill Road** – Open to traffic. Planned two way lights for AW/Balfour Beatty Water Main works from 9/05.

*These dates are subject to change

03rd June 2023 to 31st July 2023



1 Steeple Claydon to Twyford – Open to Traffic. MHR Crossing Open under lights.

2 Addison Road – Closed to Traffic. Construction of the embankment for OXD line to handover to EWR. In addition completion of the new bridge and permanent re-alignment of the highway – open with two lanes and parapets on.
EWR KEY INTERFACE
Line Item – 3168

No through Access to all emergency services as impassable – for works in via West St compound. Access for Farm to South and Steeple Claydon via diversion.

3 Gawcott Road – Open to Traffic using new temp link road alignment.

4 Werner Terrace Rd – Closed for demolition of the bridge and construction of new bridge and highway.
Line item – 2856.
diversion 4.6 miles

No Access to all emergency services.

5 Queen C. Road – Open to traffic

6 School Hill Road – Open to traffic..

August 2023 to December 2023



1 Steeple Claydon to Twyford – Open to Traffic. MHR Crossing Open under lights and due to Gawcott Rd closure the EWR bridge will have two way lights.

2 Addison Road – Open to traffic over new permanent re-alignment.

3 Gawcott Road – Closed to complete permanent Perry Hill Re-alignment of highways and utilities over new Perry Hill Overbridge

4 Werner Terrace Rd – Closed for demolition of the bridge and construction of new bridge and highway.

5 Queen C. Road – Open to traffic

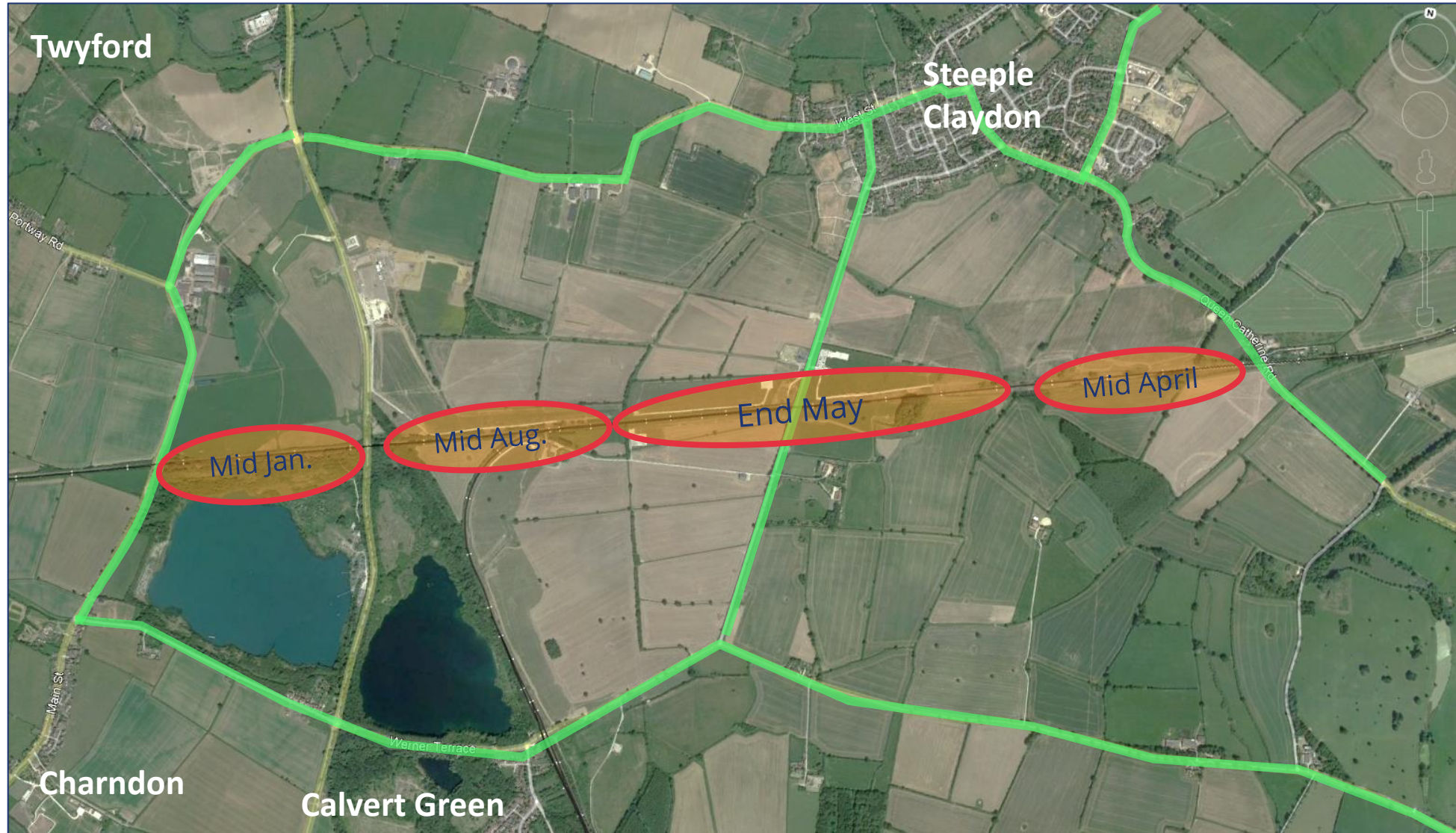
December 2023 to Q2 2025



- 1 **Steeple Claydon to Twyford** – Open to Traffic. MHR Crossing Open under lights
- 2 **Addison Road** – Open to traffic over new permanent re-alignment.
- 3 **Gawcott Road** – Open to traffic over new permanent alignment
- 4 **Werner Terrace Rd** – Closed for demolition of the bridge and construction of new bridge and highway.
Line item - 2856
Diversion is 4.02 miles
No Access to all emergency services
- 5 **Queen C. Road** – Open to traffic

*These dates are subject to change

Hand over



Contact our HS2 Helpdesk team

HS2

You can contact our HS2 Helpdesk team all day, every day of the year on:

Freephone **08081 434 434**

Minicom **08081 456 472**

Email **hs2enquiries@hs2.org.uk**



Calvert Area Liaison Meeting

DRAFT

16th March 2023

Chris James

